

# THE HISTORY OF AUTOMATION IN FEED MILLS



Image by Easy Automation

## 19TH – LATE-20TH CENTURY = TURN-KEY PROCESSES

Everything in the feed mill was done manually. Processes were started and stopped by opening and closing manual gates and pulling levers; employees would use weigh buggies for batching with every ingredient measured by hand.

## 1970s = CUSTOM CIRCUIT BOARDS AND ELECTRICAL CONTROL BOARDS

Circuit boards were custom built and could only perform simple processes due to limited memory. The technology allowed limited inputs, enabling an employee to make limited decisions at one central location.

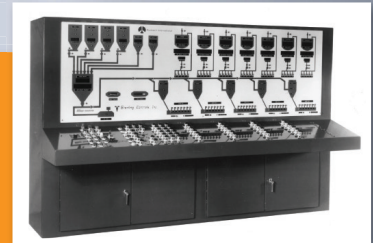


Image by Sterling Systems & Controls

## 2000s = PERSONAL COMPUTERS

Proprietary batching control hardware became obsolete, with feed mills expecting software solutions that would work on common operating systems. With two to three times more memory than previous options, more tasks could be accomplished at one location, and the first electronic feed formulation software was born.



Image by Easy Automation

## 2010s = DATA COLLECTION

With improved processing power and smaller, less costly components, companies were able to track more data. This meant more complicated feed formulas, automatic data compilation and the ability to gather data inputs from more equipment.

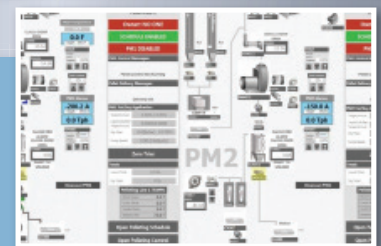


Image by Comco

## PRESENT DAY = INTERNET AND MOBILE

With automatic alerts sent to employees wherever they are, employees no longer needed to sit at a workstation to run equipment. Data could now be collected and from multiple facilities with artificial intelligence being able to analyze data for big picture results.



Image by WEM Automation